



Construction Vehicle Retrofitting in Detroit



Quick Summary and Action Steps for Community Members

How do construction vehicles affect my neighborhood and our health?

In many Detroit neighborhoods, older diesel construction vehicles—like dump trucks and bulldozers—can be a source of air pollution.²



Diesel exhaust from these vehicles can make health problems like asthma and heart disease worse—especially for children, older adults, or people living near construction sites.³

Retrofitting construction vehicles can help lower pollution.

Retrofitting is the process of adding new technology and upgrading systems on older vehicles.

Example:
Retrofitting might look like replacing a diesel engine with an electric motor and battery pack.

What are other reasons construction vehicle retrofitting is important?

Construction vehicle retrofitting can:

- Improve safety of older machines by adding features like accident avoidance systems.^{4,6}
- Increase efficiency by updating machines to perform new tasks or decreasing the time it takes to complete existing tasks.^{4,6}
- Reduce environmental impact by decreasing the labor that comes with manufacturing new vehicles.^{5,6}

Retrofit vehicle

- Lowers cost
- Uses less energy
- Extends life of existing equipment

vs.

Replace vehicle

- Costs more
- Uses more energy
- Replaces some parts needlessly

Compared to just using older construction vehicles, retrofitting and replacement can both mean less pollution and increased safety.



Can construction vehicle retrofitting help clean the air in Detroit?

Many are working to make sure city-funded construction projects use cleaner, low-emission equipment in the future.^{7,8} These changes are needed to help reduce the amount of pollution in the air.

Local groups like Southwest Detroit Environmental Vision (SDEV) are working to protect public health by replacing old diesel engines or adding special filters to make them cleaner.^{7,8}

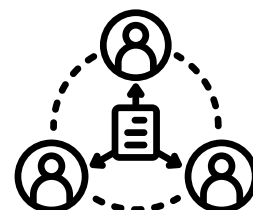
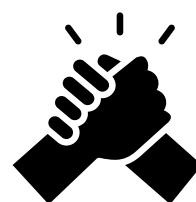
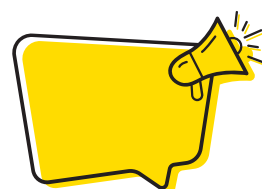
Protect yourself and your community:



Scan this QR code or go to: <https://linktr.ee/airpollutionresources>

How can I support my community?

- Ask local leaders and city officials to support the use of cleaner construction equipment on city-funded projects—especially in neighborhoods with high air pollution.
- If you notice construction sites with lots of diesel fumes or long idling trucks (more than 5 minutes in a 1 hour period), report an environmental complaint to the City of Detroit by calling 313-876-4715. Your voice can help draw attention to pollution hot spots.
- Groups like Southwest Detroit Environmental Vision are already working to reduce diesel pollution. Follow their work, attend events, and share their efforts with others in your neighborhood.
- If construction is happening near your home, ask if the vehicles being used are retrofitted or low-emission. Showing that residents are paying attention can encourage cleaner choices.
- Share information about diesel pollution and why cleaner construction equipment matters—especially for people with asthma, heart disease, or young children.



Please see http://mleead.umich.edu/Coec_Fact_Sheets.php for the citations included in this factsheet.

This research was supported by the National Institute of Environmental Health Sciences (NIEHS) (#R01ES022616, #R01ES032389) and the Fred A. and Barbara M. Erb Family Foundation, with additional support provided by the Michigan Center on Lifestage Environmental Exposures and Disease (M-LEEaD) (NIEHS #P30ES017885).